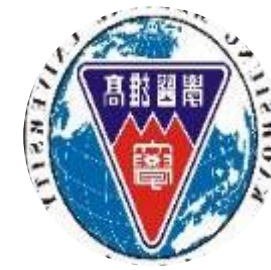




Kaohsiung Medical University (KMU)



Established in 1954,
Kaohsiung **M**edical **U**niversity (**KMU**) is **the first** private medical university in Taiwan.

- In the early stage, **KMU** (originally known as Kaohsiung Medical College) is the center of medical care on establishing and playing a key role to tackle tropical diseases. Nowadays, **KMU** is the leading medical institution in Southern Taiwan.
- **KMU** is currently equipped with 4+1 affiliated hospitals which not only provide comprehensive health care to the public but also offer integrated medical training to medical interns.
- **KMU** provides a wide range of medical-related courses and the facilities both for basic and clinical research of good quality.

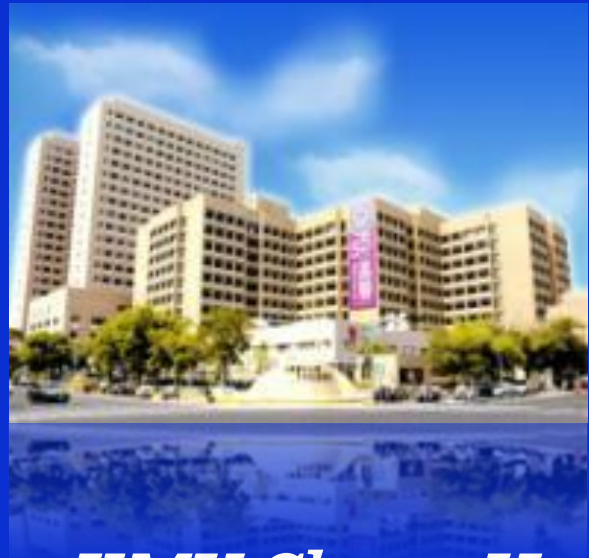




KMU's Affiliated Hospitals

Opportunities for internship & careers in 5 reputable hospitals

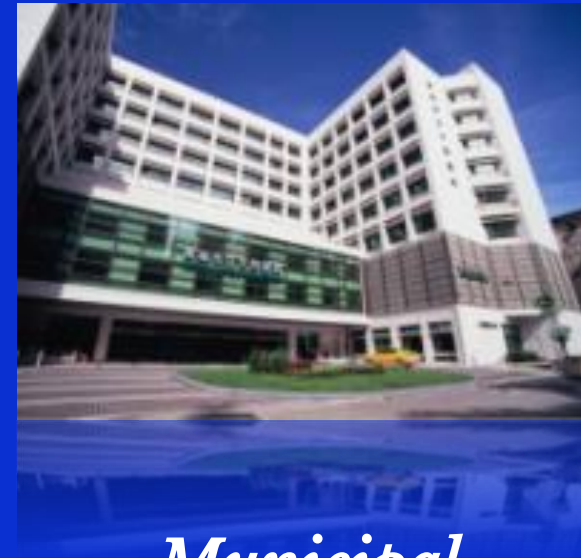
KMU manages 4+1 reputable teaching hospitals that offer comprehensive and humanitarian healthcare to the people of southern Taiwan.



*KMU Chung-Ho
Memorial Hospital*



*Municipal
Hsiao-Kang Hospital*



*Municipal
Ta-Tung Hospital*



*Municipal
Ci-Jin Hospital*



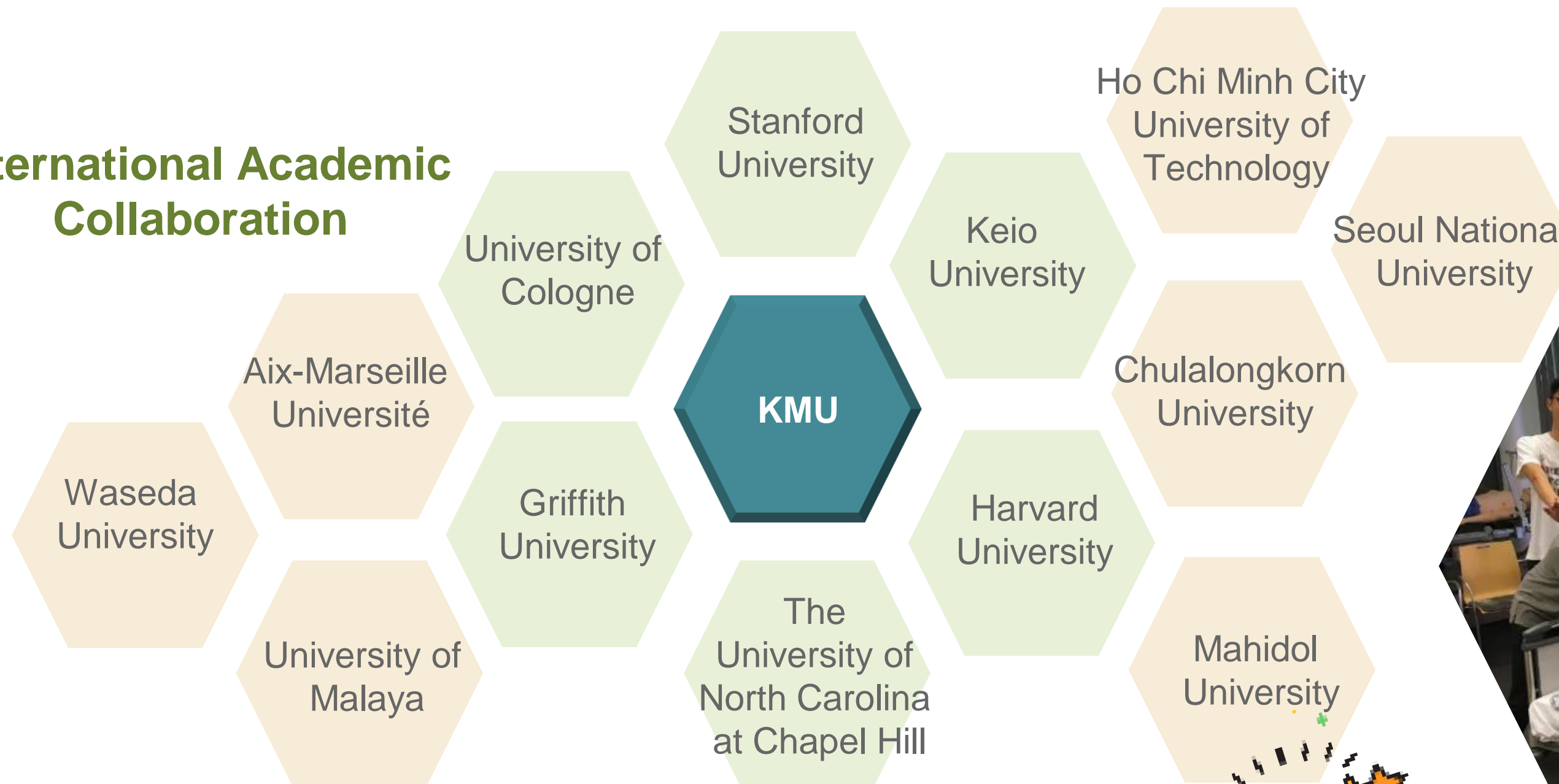
*KMU
Gangshan Hospital*

- Chung-Ho Memorial Hospital, located on campus, is particularly notable for being the largest teaching and research hospital in the South.
- Chung-Ho Memorial Hospital was accredited by JCI in 2016 & 2019, an international accreditation system, to certify institutions/organizations recognized quality and safety in health care.
- KMU Gang-Shan Hospital was approved by the Ministry of Health and Welfare and will be in operation from 2023.

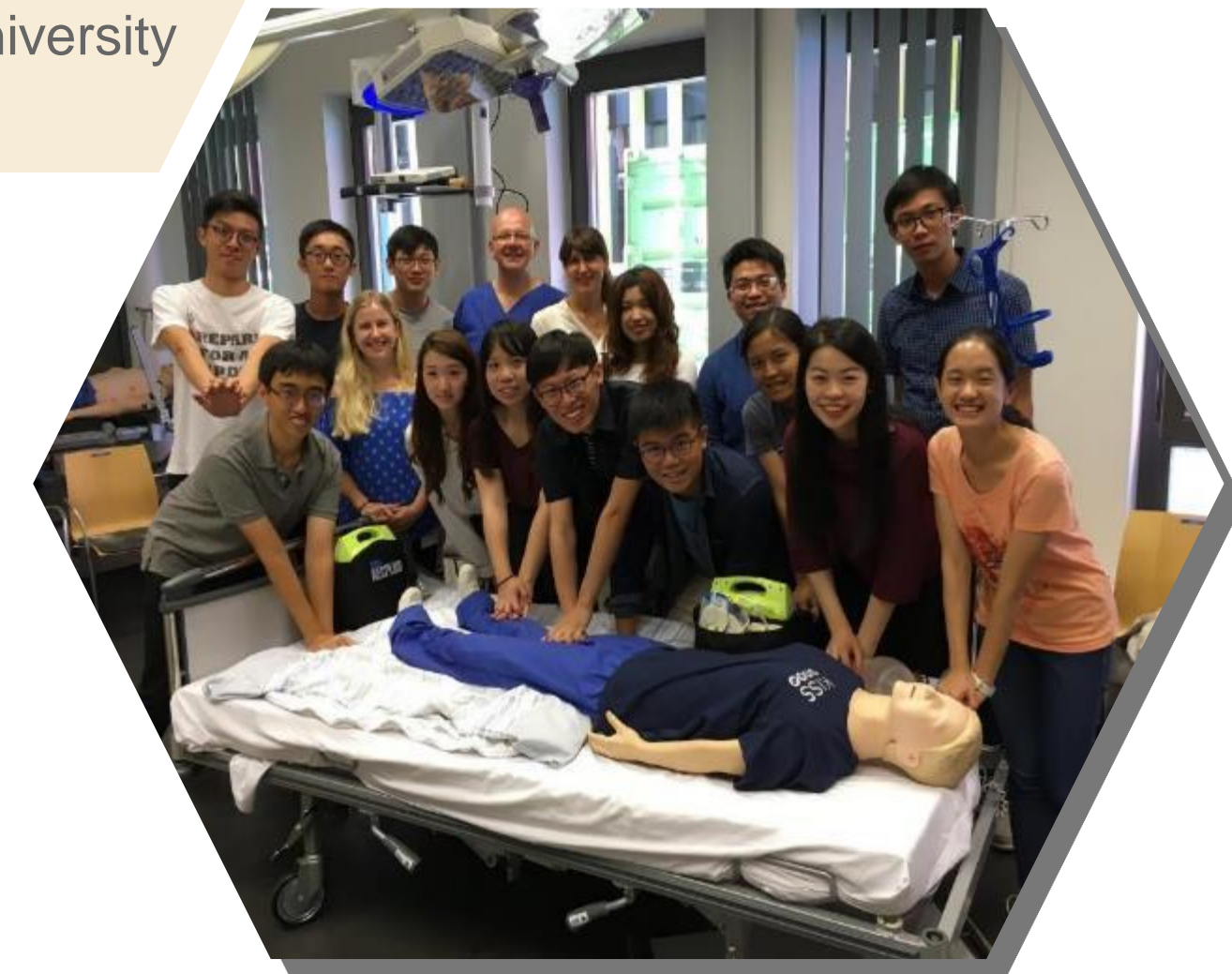


KMU provides a wide range of medical-related courses and facilities both for basic and clinical research of good quality.

International Academic Collaboration



- **6488** students
- **+340** international students from more than **40** countries
- **Overseas internship/academic exchange** offered



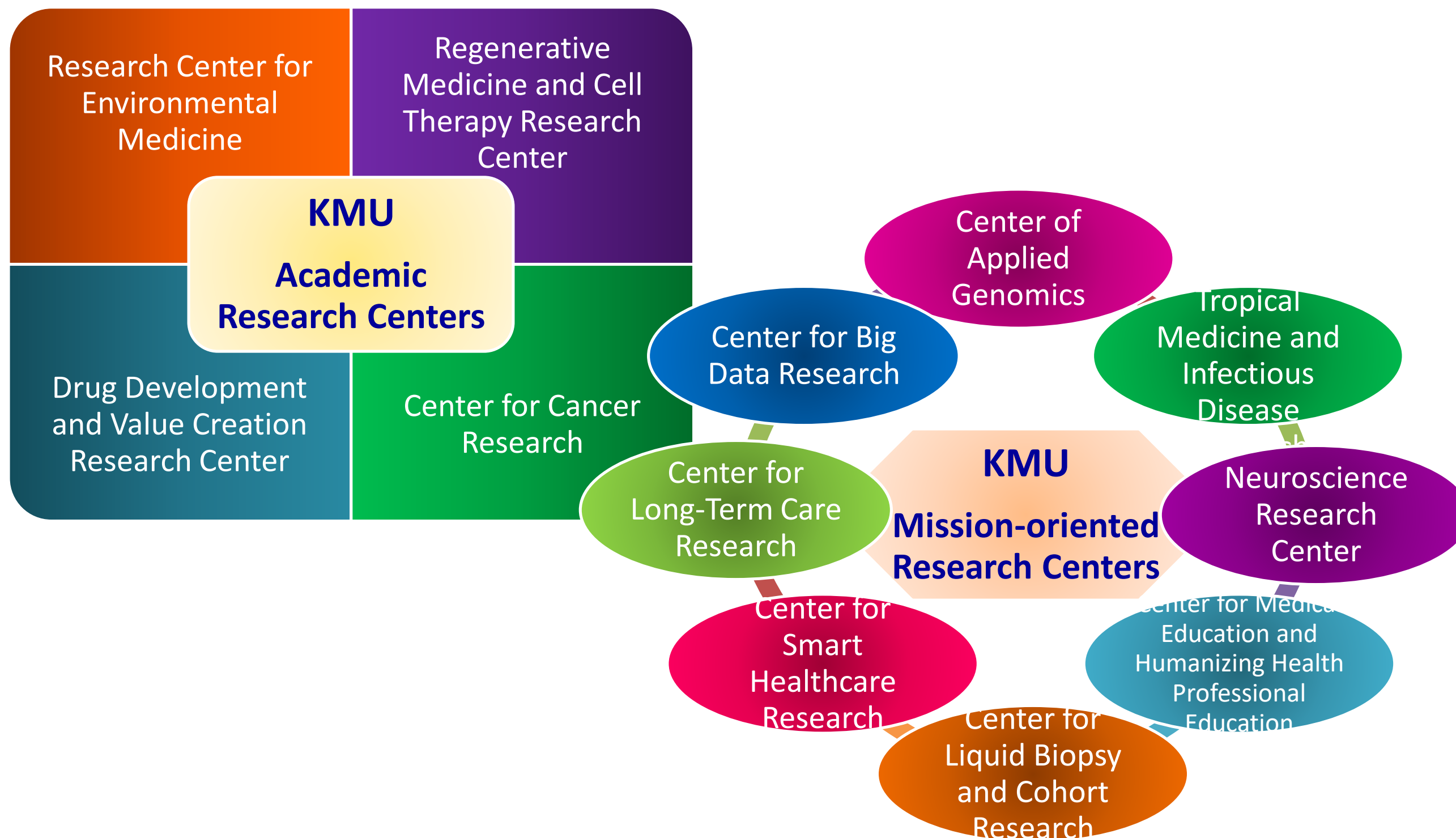
- **TOP 1** private university in Taiwan in the Impact Ranking 2021
- The world's **top 10** in SDG 3 (**Good health and well-being**), 2021



Scientific Research @ KMU

KMU Research Centers

With **4** Academic Research Centers and **8** Mission-oriented Research Centers, KMU is determined to solve major health issues.



KMU Publication



KAOHSIUNG JOURNAL OF MEDICAL SCIENCES		
Journal Impact Factor™		
2020	Five Year	
2.744	2.296	
JCR Category	Category Rank	Category Quartile
MEDICINE, RESEARCH & EXPERIMENTAL in SCIE edition	93/140	Q3
Source: Journal Citation Reports™ 2020		

KMU publishes a peer-reviewed scientific journal **Kaohsiung Journal of Medical Sciences**, with Impact Factor₍₂₀₂₀₎: **2.744**.

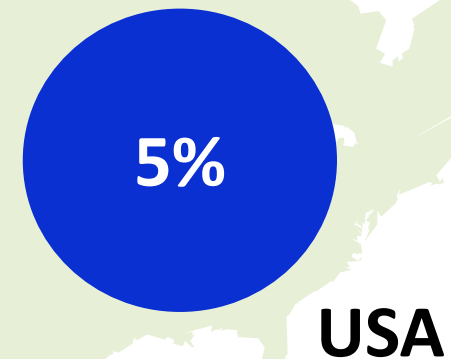
TOP 5 places of origin for international students at KMU:



KAOHSIUNG MEDICAL UNIVERSITY

Each year, KMU offers more than 300 places in degree programs for international and overseas Chinese students to pursue higher education/ research in the important medical base in southern Taiwan.

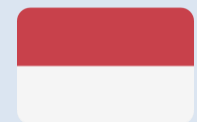
[Data Source:2021/9/7]



Most in-demand programs for each country



Medicinal and Applied Chemistry,
Environmental and Occupational
Medicine



Nursing, Natural Products



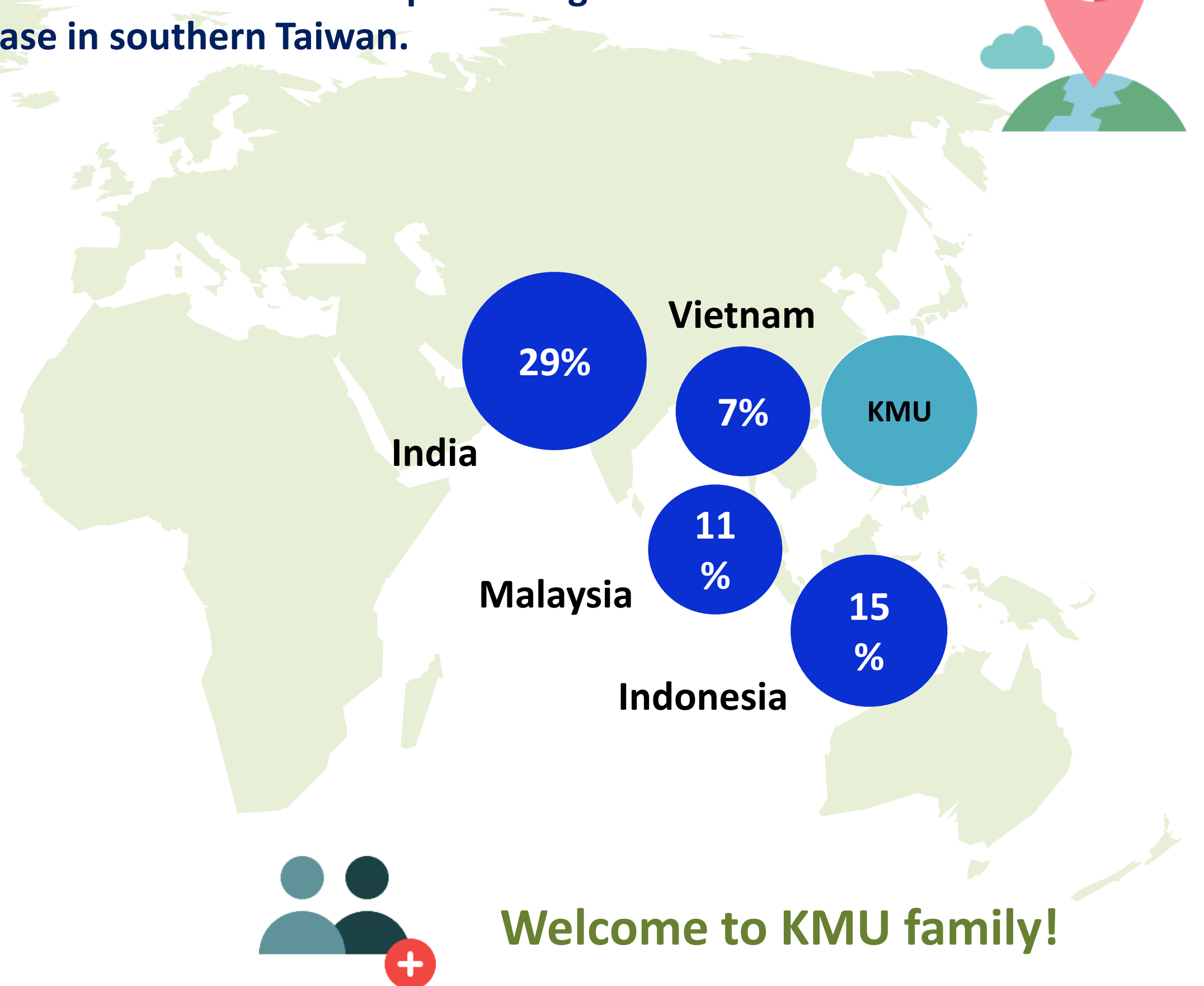
Dentistry, Medicine



Graduate Institute of Medicine,
Natural Products



Medicine



Welcome to KMU family!

7 Colleges & Degree Programs

Available for international students

College of Medicine

Medicine

Post-Baccalaureate Medicine

Sport Medicine

Respiratory Therapy

Tropical Medicine

Environmental & Occupational Medicine

Biomedical Engineering

College of Dental Medicine

Dentistry

Oral Hygiene

College of Pharmacy

Pharmacy

Fragrance & Cosmetic Science

Natural Products

College of Nursing

Nursing



KAOHSIUNG MEDICAL UNIVERSITY

College of Health Sciences

Public Health

Medical Laboratory Science & Biotechnology

Imaging & Radiological Sciences

Occupational Therapy

Physical Therapy

Healthcare Administration & Medical Informatics

College of Life Sciences

Medicinal & Applied Chemistry

Biotechnology

Biomedical Science & Environmental Biology

Life Sciences

Medicinal Chemistry and Biotechnology

College of Humanities and Social Science

Psychology

Medical Sociology & Social Work

**For the complete program list, please visit [our website](#).*



Funding Opportunities in Research

Undergraduate Students:

◆ Summer Research Grant

Given stipend of 8,000-10,000 NTD for each student participant in summer research

Jul. - Aug.	Sept.	Feb. Next Year
Students have to attend workshops and work on the research project during July and August under the supervision of instructing professor.	Students shall submit the final report before the end of September.	Students are encouraged to apply for the MOST College Student Research Scholarship.

◆ MOST College Student Research Scholarship (MOST)

A monthly stipend of 6,000 NTD, a total of 48,000 NTD of the eight-month research period.

Undergraduate & Graduate Students:

◆ Student Publication Award

Students who published research achievements on academic journals, including SCIE, SSCI, EI, A&HCI, THCI, or TSSCI journals, are qualified to apply for 1,250 - 15,000 NTD award for each paper.

For more funding opportunities, please feel free to contact KMU.

Short-term Programs & Internship

KAOHSIUNG MEDICAL UNIVERSITY



Clinical Elective at Kaohsiung Medical University Hospital (KMUH)

International medical students are welcome to join KMU's clinical program. Students will be able to observe and learn the medicine practice in Taiwan.

TEEP x KMU (Taiwan Experience Education Programs)

Areas of Study:
Chemistry, Biology, Medicine, Environmental Health, Epidemiology, Health Management, Natural Product, Drug Development, Herbal Medicine, Pharmaceutical Formulation, Drug Delivery System, Nanotechnology, etc.



Cultural Diversity at Campus

KMU is proud to be one of the most culturally diverse universities in Taiwan. KMU, in collaboration with students' clubs, supports a number of cultural events on campus throughout the year, like Diwali, Pongal, Lunar New Year, etc.. All events are open to students and staffs, and some events are open to the public.



Supportive Environment for improving Chinese language skills and cultural knowledge

Chinese Language Learning Resources

- Multimedia language learning classroom
- Undergraduate students (4 credits required/academic year) and graduate students (0 credit optional)
- Learning and problem consulting by appointment with teachers

Life @ KMU Campus



KAOHSIUNG MEDICAL UNIVERSITY



Eat Well



- Student Restaurant on campus
- A short 8-min walk to Bian Dang (lunch box) Street & Jilin Street (Night Market) from KMU

Convenient Transportation



- MRT/BUS stations are close to campus
- Near U-Bike stations: Kaohsiung City Public Bike - NT\$5 for the first 30 minutes

Life-enriching Experiences

More than 100 students-run clubs – the perfect way to get involved in KMU family and to share one's interests

Tuition Fee/semester

- School of Medicine: 2,440 USD
- School of Dentistry: 2,240 USD
- Other undergraduate programs: 1,570 USD - 1,900 USD
- Graduate programs: 1,600 USD - 2,040 USD

On-campus Accommodation

A Dorm	H Dorm
3-4 Beds Room	1-4 Beds Room
\$350(USD) - \$530(USD)/Semester	\$260(USD) - \$1,050(USD)/Semester

Off-campus Housing

Online Housing Information Inquiry:

Students can search for rental house information online before signing the tenancy agreement. Address, rental fee, landlord’s name, contact number, even the template of tenancy agreement are available online.

(Address)

(Gender restrictions)

(Housing Layout)

(Rental Fee <=)

(Accreditation)

(Service Quality)

☐ 雅房Room (Shared Toilet)

☐ 套房Studio

☐ 整間(層、棟)Floor-through

☐ 其他Others

☐ 全部

不限Unlimited

請選擇

★★★★★

請選擇

Audio-Visual Room in Dorm A



*For International students, tuition fee of undergraduate programs of School of Post-baccalaureate Medicine & School of Dentistry is twice as much as that of local and Overseas Chinese students.



Living Support/ Voluntary Activity

KMU makes the utmost efforts to ensure students' safety and to give students living support with various approaches:



Meeting for International Students

- Communication/ Information updates
- Cultural events



Part Time Job

- Part-time job opportunities on campus (the maximum work hours are 20 hours per week, except for summer and winter vacation)



Various events hosted on campus, and students can also contribute their English ability by participating remote area teaching service for local children as a volunteer.

Scholarships Opportunities



KAOHSIUNG MEDICAL UNIVERSITY



KMU Scholarship

3 types scholarship, the award amount up to NTD 260,000 (=USD8,600)/year



Taiwan Scholarship

9 awards in 3 categories: the award amount up to NTD 360,000 (=USD12,000)/year



Elite Scholarship

Award: NTD300,000 (=USD10,000)/year

For more scholarships opportunities, please feel free to contact KMU.

Plan Your Study

KMU provides **2 intakes** each year –
Fall Intake & Spring Intake.

★ Application Period:

Fall Intake: December - March

Spring Intake: July - October

**Spring Intake is available for graduate programs only.*



KAOHSIUNG MEDICAL UNIVERSITY



Explore the things you love
or your study interests,
welcome to explore **KMU** ;-)

Set your study goals!



Visit KMU website/campus,
Contact professor(s) as your
potential advisor,
Get information from senior
students, faculty or
admissions office, etc..



Read carefully KMU's
Application Guidelines of the
year,
Submit your applications,
Admitted students register
@ KMU in Sept./Feb..



Thank you for choosing KMU!

Any questions?



—— *KMU Admissions*

Secretariat



sec@kmu.edu.tw

- President Mailbox
- General Info.

Office of Research & Development



devel@kmu.edu.tw

- Research
- Academic publication

Office of Academic Affairs



academic@kmu.edu.tw

- Applications & Admissions
- Registration & Curriculum

Office of Global Affairs



ciae@kmu.edu.tw

- Short-term exchange programs
- Scholarships

Office of Student Affairs



osa@kmu.edu.tw

- Dormitory
- Club, student's life assistance

The Center for Languages and Culture



lc@kmu.edu.tw

- Mandarin learning